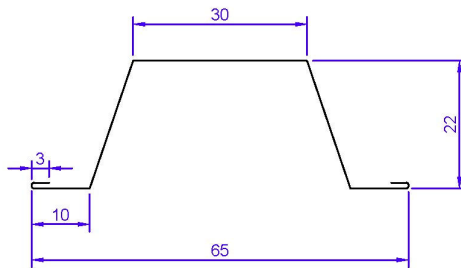
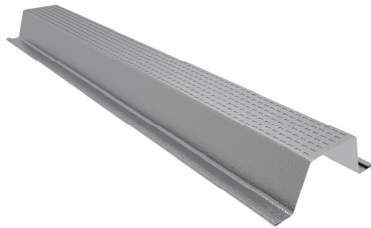


RFI 22 mm Ceiling Batten



RFI 22 mm Ceiling Batten is manufactured using TRUECORE® steel (aluminium/zinc alloy coated) complying with AS1397 G550, AM150 (550 MPa minimum yield stress). Also available in Zinalume® steel

- The lips of the bottom flanges are rounded for improved safety during handling and installation by trades.
- The top flange has an embossed surface to make it easier for the plasterboard screws to grip
- quick and easy to install because they can be lapped, eliminating the time-consuming process of cutting to length.
- nominal lapping will ensure continuity and straightness of fastener alignment
- high strength, lightweight and won't shrink, warp or twist

Fixing Details	Timber	Metal
	M5.5-11x40 BATTENZIPS	12-14x20 Hex Head
Capacity	13 mm Plasterboard	13 mm Plasterboard
Maximum Span	1200 mm	1200 mm
Maximum Spacing	600 mm	600 mm